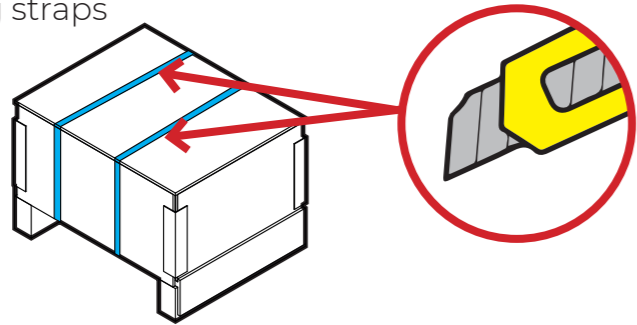


1. Unboxing



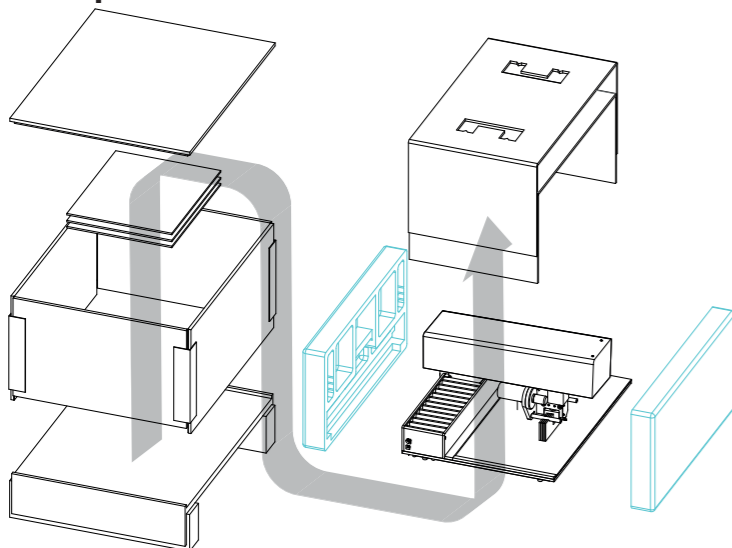
A Cut binding straps



Content

- UniFoilPrinter Flat Bed
- Powercable
EU plug UFPRELEC018
UK plug UFPRELEC020
US plug UFPRELEC019
- Power supply UFPRELEC012
- USB cable UFPRELEC015
- Ribbon UniFoilPrinter Gold UFPR0000002
- User guide SPUP0000103
- Quickguide SPUP0000104
- Lock removal instructions SPUP0000107
- Screwdriver SPUP0000111
- Spine support set UFPRESUP0002 +3 +4 +5
- Empty core UFPR0000005
- USB drive UniFoilPrinter SPUP0000144
- Paper ring SPUP0000142
- Locking Tool SPUP0000097
- 4x Screw with cross head SPUP0000028
- Rubber/foam pad SPUP0000046
- Polycarbonate plate SPUP0000130

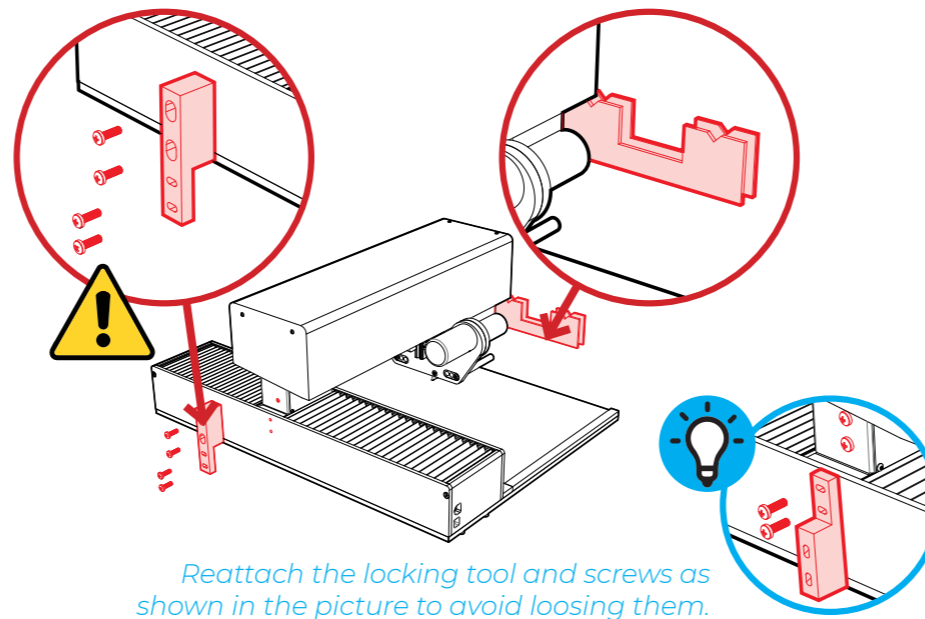
- B**
- Remove the wooden box (up)
 - Remove protective foam
 - Lift the machine onto the table (2 persons)
 - Remove plastic bag
 - **Keep the packaging material for future transportation.**



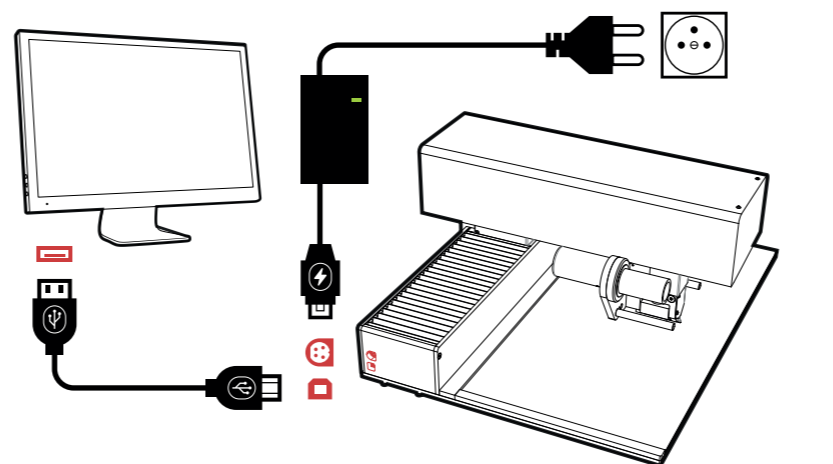
2. Set up



A Remove the locking tool and cardboard supports **before connecting the printer!**



B Connect USB cable and power supply



C

- Install the software directly from the USB drive or download the software from our website.
<https://unifoilprinter.com/en/software>
- Follow the instructions.

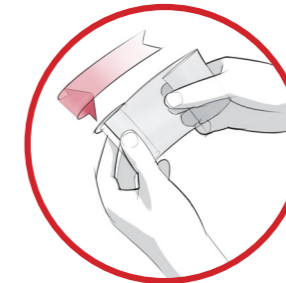
D Check connection via software



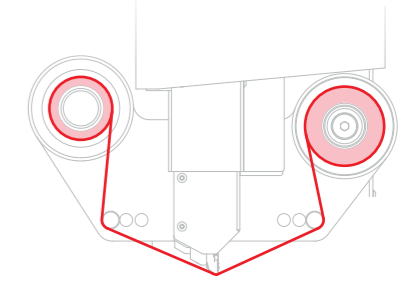
3. Let's get started!



A

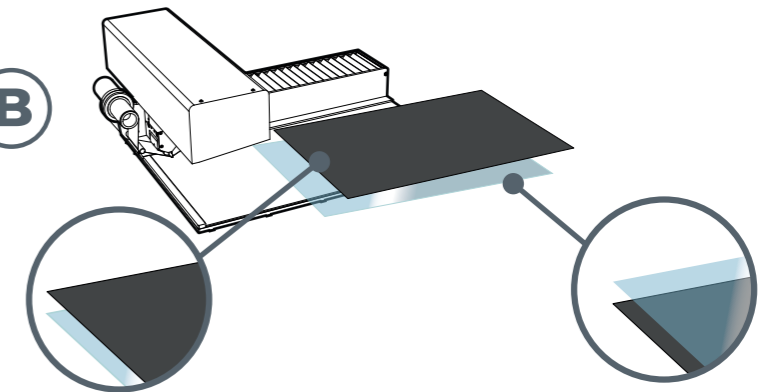


1. Connect foil to an empty core.



2. Install the foil (with the matte side down) and make sure it is tensed.

B



- Use the black **foam pad** on top when printing on hardcovers or other hard materials.
- You may need to remove paper rings for printing on hard materials

- Use **acrylic plate** on top when printing on clear and soft covers or other flexible materials.
- You may need to add paper ring(s) for printing on soft materials

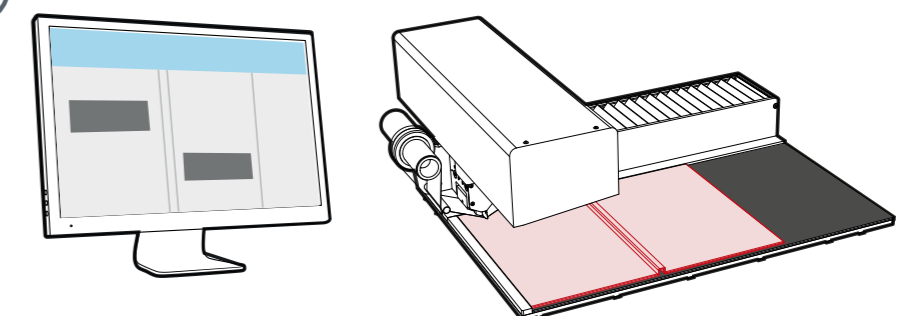
C

Create a design.



D

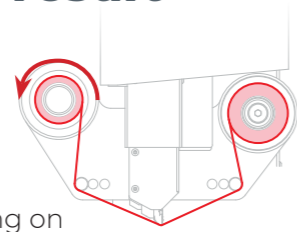
Position the object and press "PRINT".



Troubleshooting bad print result

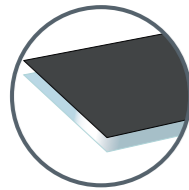


- Is the foil installed and spinning correctly? Is the foil tensed properly? If not, wind the foil manually till it is straight and tensed.
- Add or remove paper rings depending on your material
- Are you using the correct settings? Check selected material. If correctly selected go to **Settings > Customize** and check parameters.

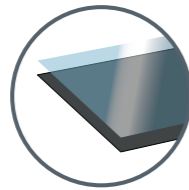


	Speed	Torque	Burning Time	Motor speed	Spine Torque*
Aluminum	14	225	2100	30	160
Graphite	14	225	2100	30	160
Quartz (Black Metallic)	14	225	2100	30	160
Azur (Blue Metallic)	14	225	2100	30	160
Ruby (Bordeaux Metallic)	14	225	2100	30	160
Gold (Metallic)	14	225	2100	30	160
Bordeaux	10	235	2200	30	160
Dark Green	10	235	2200	30	160
Dark Blue	10	235	2200	30	160
Black	10	235	2200	30	160
PU Coated Material	10	225	2050	30	160
Leather	8	210	2400	30	160
Matt	10	120	2500	30	160
Clear	10	160	1600	30	160

- Are you using the correct support material?

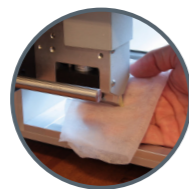


Use the black foam pad on top when printing on hardcovers or other hard materials.



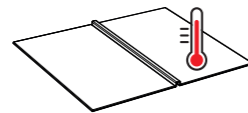
Use Acrylic plate on top when printing on clear and soft covers or other flexible materials.

- Clean covers + bars + printhead with isopropyl alcohol or our cleaning wipes (**SPUP0000138**)



- Try to print with other foil.

- Increase the temperature of the material you are printing on for better result.

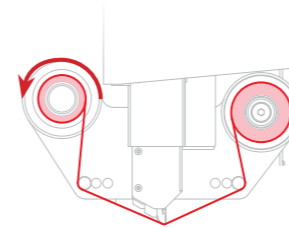


- Contact your distributor and add a video of the issue (or clear problem description) and serial number.

Troubleshooting – foil is not spinning



- Check foil holders for broken metal rings. There must be no extra metal rings between printer and foil coil.
- Is the foil installed and spinning correctly? Is the foil tensed properly? If not, wind the foil manually till it is straight and tensed.



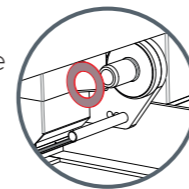
- Are you using the correct settings? Check selected material. If correctly selected go to **Settings > Customize** and check parameters.

	Speed	Torque	Burning Time	Motor speed	Spine Torque*
Aluminum	14	225	2100	30	160
Graphite	14	225	2100	30	160
Quartz (Black Metallic)	14	225	2100	30	160
Azur (Blue Metallic)	14	225	2100	30	160
Ruby (Bordeaux Metallic)	14	225	2100	30	160
Gold (Metallic)	14	225	2100	30	160
Bordeaux	10	235	2200	30	160
Dark Green	10	235	2200	30	160
Dark Blue	10	235	2200	30	160
Black	10	235	2200	30	160
PU Coated Material	10	225	2050	30	160
Leather	8	210	2400	30	160
Matt	10	120	2500	30	160
Clear	10	160	1600	30	160

- Ensure that the ring surface is clean and straight. Inspect for splinters and remove if needed.



- Add paper ring(s) on *right* side like in the illustration. Item code: (**SPUP0000142**)



- Try to print with other foil.

- Contact your distributor and add a video of the issue (or clear problem description) and serial number.

Troubleshooting – errors

- “No communication with the printer” or “printer not connected”:
 - Close the software and do a power cycle by disconnecting and connecting back the power supply
 - Change USB cable or try other USB port
 - Reinstall software. Pay attention for driver installation during the process.
 - Is the computer connected to the power supply with grounding? If not, connect your computer to proper power supply.
- Head error
 - Is the locking tool removed?
 - Inspect the 3 movements of the printer after connecting to power supply. Inspect the sensors and cables.
 - Remove the foil and press the head up manually 5 – 10 times till the end to loose the mechanism inside.
 - Check torque via software. Go to **Tools > Testing and Calibration > Read Torque**. Follow the instructions there.
 - Check for play in the pressure mechanism. Are there parts feeling loose?
- Dots damaged error
 - Clean printhead
- Contact your distributor and add a video of the issue (or clear problem description) and serial number.

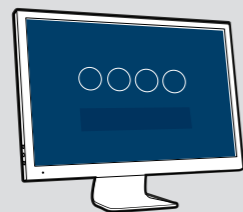


Please check your **User Manual** for further instructions and troubleshooting or check the included **USB drive**.

Transportation

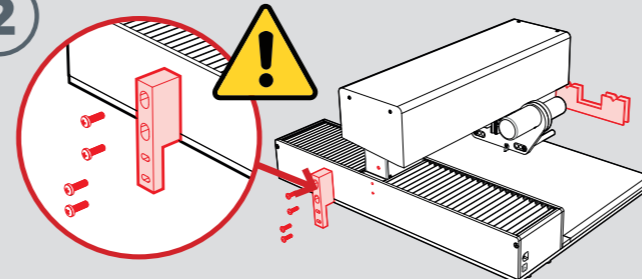


1



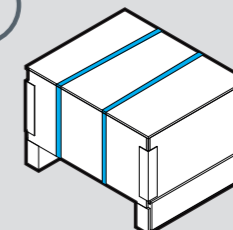
- Go to **Settings > Move to transport position** to move the printhead to transport position
- Remove USB and power cables within 30 seconds.

2



- Connect the locking Tool with 4 screws and fasten firmly.

3



- Use the original packaging material.
- Add a note with problem description.
- Fasten the box with straps or use strong tape in several layers.